

Test Report

No : CE/2006/A6073 Date : 20061103 Page: 1 of 4


TXC CORPORATION
4F, NO. 16, SEC. 2, CHUNG YANG S. RD., PEITOU 112,
TAIPEI, TAIWAN.



Report on the submitted sample said to be GLASS CRYSTAL.

Style/Item No : 6X, 7A SERIES
Sample Receiving Date : 2006/10/27
Testing Period : 2006/10/27 TO 2006/11/03

=====
Test Requested : In accordance with the RoHS Directive 2002/95/EC, and its amendment directives.
Test Method : (1) With reference to BS EN 1122:2001, Method B for Cadmium Content. Analysis was performed by ICP-AES.
(2) With reference to US EPA Method 3050B for Lead Content. Analysis was performed by ICP-AES.
(3) With reference to US EPA Method 3052 for Mercury Content. Analysis was performed by ICP-AES.
(4) With reference to IEC 62321, Ed.1 111/54/CDV . Determination of Hexavalent Chromium by UV/Vis Spectrometry.
(5) With reference to US EPA 3540C for PBB/PBDE Content. Analysis was performed by GC/MS and screening via US EPA 3550C with HPLC/DAD/MS.
Test Result(s) : Please refer to next page(s).


Daniel Yeh, M.R. / Operation Manager
Signed for and on behalf of
SGS TAIWAN LTD.

Test Report

No : CE/2006/A6073 Date : 20061103 Page: 2 of 4

TXC CORPORATION

4F, NO. 16, SEC. 2, CHUNG YANG S. RD., PEITOU 112,
TAIPEI, TAIWAN.

Test results by chemical method (Unit: mg/kg)



| Test Item (s): | Method (Refer to) | Result | MDL |
|---|----------------------|---------|-----|
| | | No.1 | |
| Cadmium (Cd) | (1) | n.d. | 2 |
| Lead (Pb) | (2) | 63036.7 | 2 |
| Mercury (Hg) | (3) | n.d. | 2 |
| Hexavalent Chromium (CrVI) by alkaline extraction | (4) | n.d. | 2 |
| Sum of PBBs | (5) | n.d. | - |
| Monobromobiphenyl | | n.d. | 5 |
| Dibromobiphenyl | | n.d. | 5 |
| Tribromobiphenyl | | n.d. | 5 |
| Tetrabromobiphenyl | | n.d. | 5 |
| Pentabromobiphenyl | | n.d. | 5 |
| Hexabromobiphenyl | | n.d. | 5 |
| Heptabromobiphenyl | | n.d. | 5 |
| Octabromobiphenyl | | n.d. | 5 |
| Nonabromobiphenyl | | n.d. | 5 |
| Decabromobiphenyl | | n.d. | 5 |
| Polybrominated biphenyl ethers | | n.d. | - |
| Sum of PBDEs (Mono to Nona) (Note 4) | | n.d. | - |
| Monobromobiphenyl ether | | n.d. | 5 |
| Dibromobiphenyl ether | | n.d. | 5 |
| Tribromobiphenyl ether | | n.d. | 5 |
| Tetrabromobiphenyl ether | | n.d. | 5 |
| Pentabromobiphenyl ether | | n.d. | 5 |
| Hexabromobiphenyl ether | | n.d. | 5 |
| Heptabromobiphenyl ether | | n.d. | 5 |
| Octabromobiphenyl ether | | n.d. | 5 |
| Nonabromobiphenyl ether | n.d. | 5 | |
| Decabromobiphenyl ether | n.d. | 5 | |
| Sum of PBDEs (Mono to Deca) | n.d. | - | |

Test Part Description:

NO.1 : MIXED ALL PARTS

Note : 1. mg/kg = ppm

2. n.d. = Not Detected

3. MDL = Method Detection Limit

4. Sum of Mono to NonaBDE & according to 2005/717/EC DecaBDE is exempt.

5. "-" = Not Regulated

Test Report

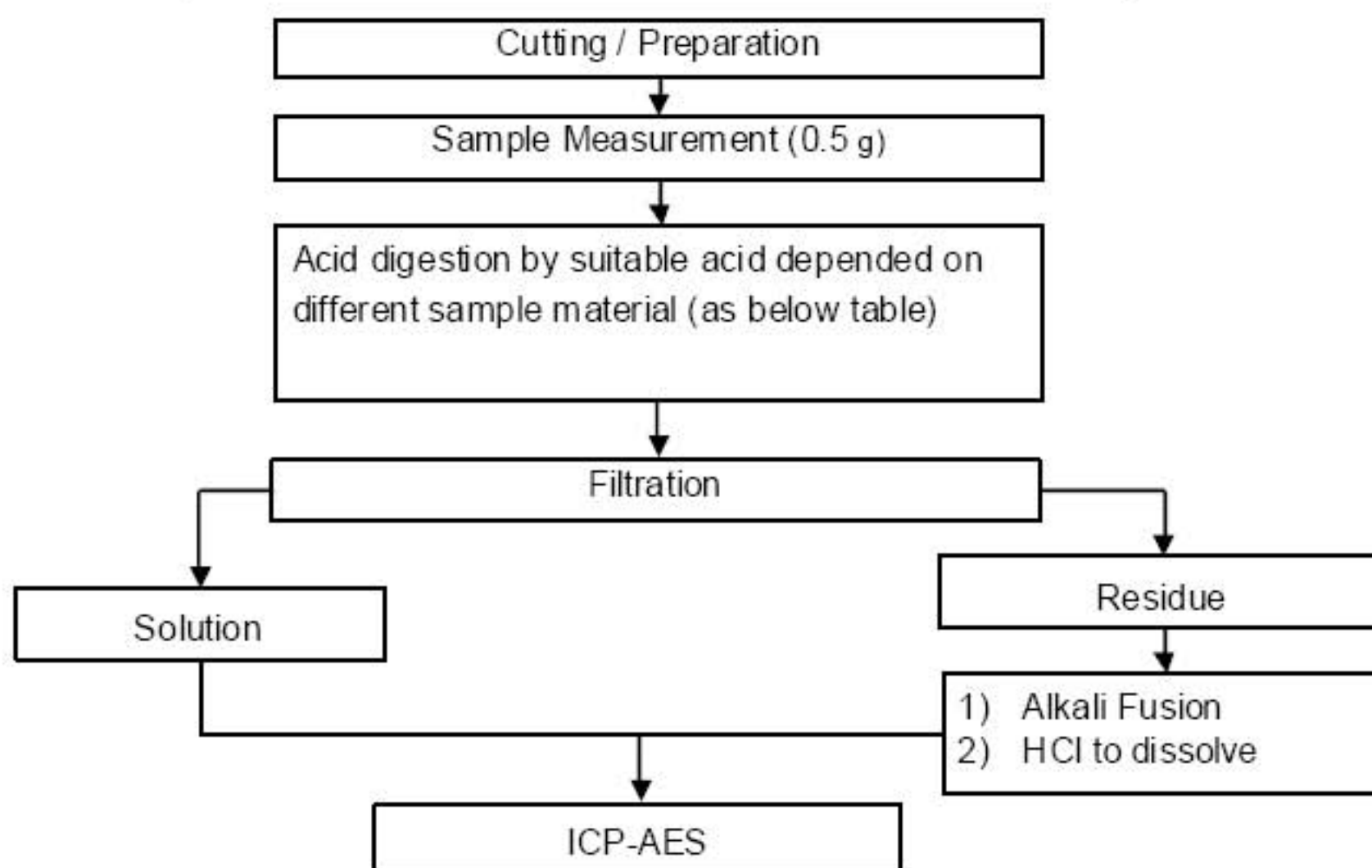
No : CE/2006/A6073 Date : 20061103 Page: 3 of 4

TXC CORPORATION
 4F, NO. 16, SEC. 2, CHUNG YANG S. RD., PEITOU 112,
 TAIPEI, TAIWAN.



- 1) These samples were dissolved totally by pre-conditioning method according to below flow chart.
- 2) Name of the person who made measurement Anren Lee
- 3) Name of the person in charge of measurement Daniel Yeh

Method 1: Flow Chart of Digestion for Cd · Pb analysis



| | |
|------------------------------------|---|
| Steel, copper, aluminum, solder | Aqua regia, HNO ₃ , HCl, HF, H ₂ O ₂ |
| Glass | HNO ₃ /HF |
| Gold, platinum, palladium, ceramic | Aqua regia |
| Silver | HNO ₃ |
| Plastic | H ₂ SO ₄ , H ₂ O ₂ , HNO ₃ , HCl |
| Others | Any acid to total digestion |

Test Report

No : CE/2006/A6073 Date : 20061103 Page: 4 of 4

TXC CORPORATION
4F, NO. 16, SEC. 2, CHUNG YANG S. RD., PEITOU 112,
TAIPEI, TAIWAN.



** End of Report **