

## Test Report

No : CE/2006/A6071    Date : 20061103    Page: 1 of 4

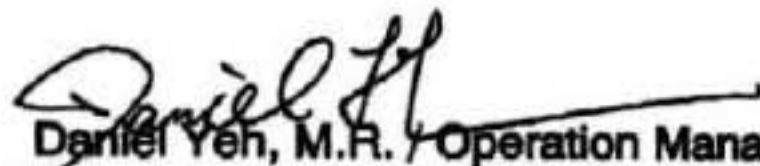
TXC CORPORATION  
4F, NO. 16, SEC. 2, CHUNG YANG S. RD., PEITOU 112,  
TAIPEI, TAIWAN.



Report on the submitted sample said to be SMD CRYSTAL.

Style/Item No : 6P, 6V, 7B, 7M, 8Z SERIES  
Sample Receiving Date : 2006/10/27  
Testing Period : 2006/10/27 TO 2006/11/03

=====  
**Test Requested** : In accordance with the RoHS Directive 2002/95/EC, and its amendment directives.  
**Test Method** : (1) With reference to BS EN 1122:2001, Method B for Cadmium Content. Analysis was performed by ICP-AES.  
(2) With reference to US EPA Method 3050B for Lead Content. Analysis was performed by ICP-AES.  
(3) With reference to US EPA Method 3052 for Mercury Content. Analysis was performed by ICP-AES.  
(4) With reference to IEC 62321, Ed.1 111/54/CDV . Determination of Hexavalent Chromium by UV/Vis Spectrometry.  
(5) With reference to US EPA 3540C for PBB/PBDE Content. Analysis was performed by GC/MS and screening via US EPA 3550C with HPLC/DAD/MS.  
**Test Result(s)** : Please refer to next page(s).

  
Daniel Yeh, M.R. / Operation Manager  
Signed for and on behalf of  
SGS TAIWAN LTD.

# Test Report

No : CE/2006/A6071 Date : 20061103 Page: 2 of 4

TXC CORPORATION

4F, NO. 16, SEC. 2, CHUNG YANG S. RD., PEITOU 112,  
TAIPEI, TAIWAN.

Test results by chemical method (Unit: mg/kg)



Test Item (s):	Method (Refer to)	Result	MDL
		No.1	
Cadmium (Cd)	(1)	n.d.	2
Lead (Pb)	(2)	n.d.	2
Mercury (Hg)	(3)	n.d.	2
Hexavalent Chromium (CrVI) by alkaline extraction	(4)	n.d.	2
<b>Sum of PBBs</b>	(5)	n.d.	-
Monobromobiphenyl		n.d.	5
Dibromobiphenyl		n.d.	5
Tribromobiphenyl		n.d.	5
Tetrabromobiphenyl		n.d.	5
Pentabromobiphenyl		n.d.	5
Hexabromobiphenyl		n.d.	5
Heptabromobiphenyl		n.d.	5
Octabromobiphenyl		n.d.	5
Nonabromobiphenyl		n.d.	5
Decabromobiphenyl		n.d.	5
Polybrominated biphenyl ethers		n.d.	-
<b>Sum of PBDEs (Mono to Nona) (Note 4)</b>		n.d.	-
Monobromobiphenyl ether		n.d.	5
Dibromobiphenyl ether		n.d.	5
Tribromobiphenyl ether		n.d.	5
Tetrabromobiphenyl ether		n.d.	5
Pentabromobiphenyl ether		n.d.	5
Hexabromobiphenyl ether		n.d.	5
Heptabromobiphenyl ether		n.d.	5
Octabromobiphenyl ether		n.d.	5
Nonabromobiphenyl ether		n.d.	5
Decabromobiphenyl ether		n.d.	5
<b>Sum of PBDEs (Mono to Deca)</b>		n.d.	-

## Test Part Description:

NO.1 : MIXED ALL PARTS

Note : 1. mg/kg = ppm

2. n.d. = Not Detected

3. MDL = Method Detection Limit

4. Sum of Mono to NonaBDE & according to 2005/717/EC DecaBDE is exempt.

5. "-" = Not Regulated

# Test Report

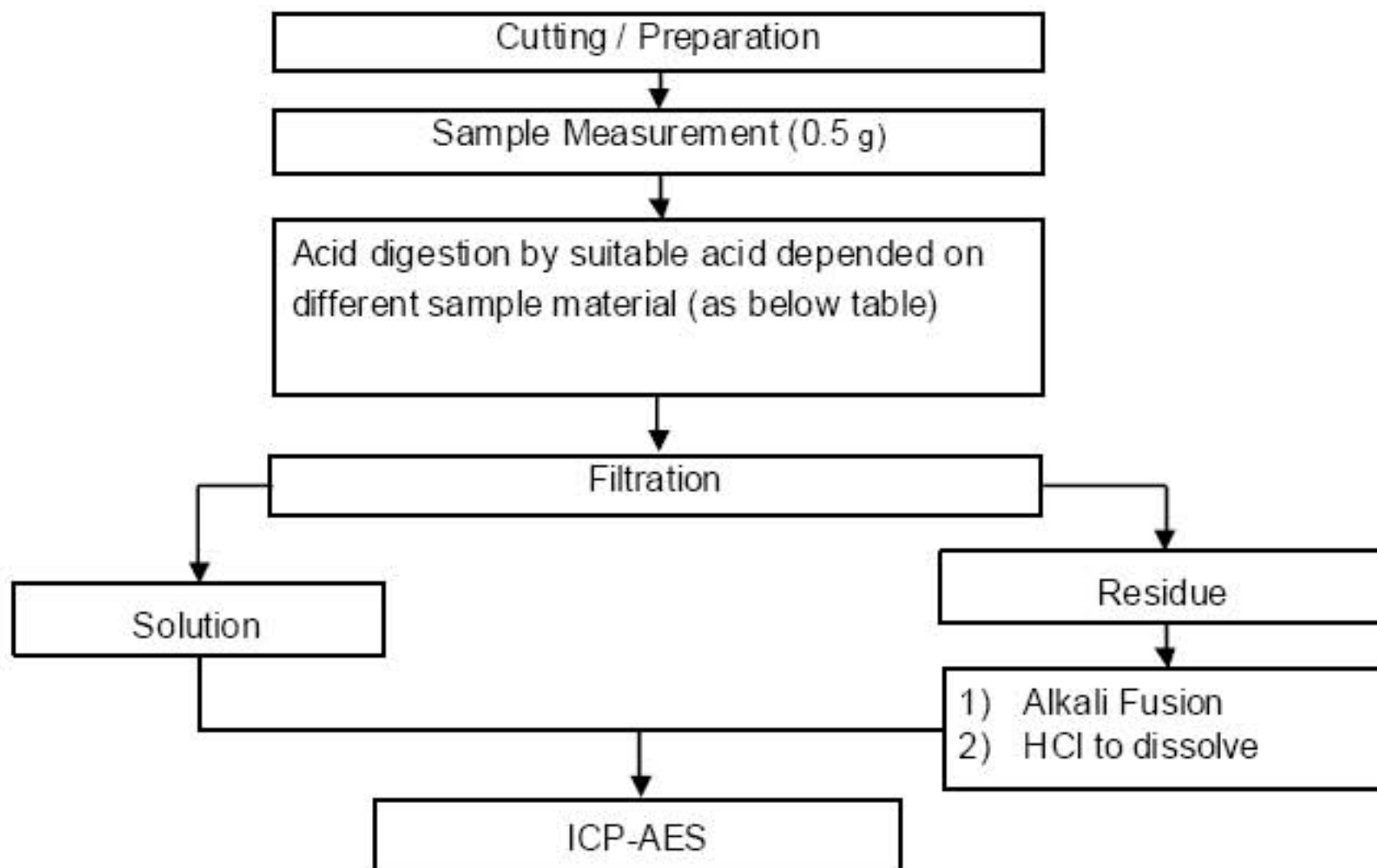
No : CE/2006/A6071    Date : 20061103    Page: 3 of 4

TXC CORPORATION  
 4F, NO. 16, SEC. 2, CHUNG YANG S. RD., PEITOU 112,  
 TAIPEI, TAIWAN.



- 1) These samples were dissolved totally by pre-conditioning method according to below flow chart.
- 2) Name of the person who made measurement: Anren Lee
- 3) Name of the person in charge of measurement: Daniel Yeh

### Method 1: Flow Chart of Digestion for Cd · Pb analysis



Steel, copper, aluminum, solder	Aqua regia, HNO <sub>3</sub> , HCl, HF, H <sub>2</sub> O <sub>2</sub>
Glass	HNO <sub>3</sub> /HF
Gold, platinum, palladium, ceramic	Aqua regia
Silver	HNO <sub>3</sub>
Plastic	H <sub>2</sub> SO <sub>4</sub> , H <sub>2</sub> O <sub>2</sub> , HNO <sub>3</sub> , HCl
Others	Any acid to total digestion

## Test Report

No : CE/2006/A6071    Date : 20061103    Page: 4 of 4

TXC CORPORATION  
4F, NO. 16, SEC. 2, CHUNG YANG S. RD., PEITOU 112,  
TAIPEI, TAIWAN.



\*\* End of Report \*\*