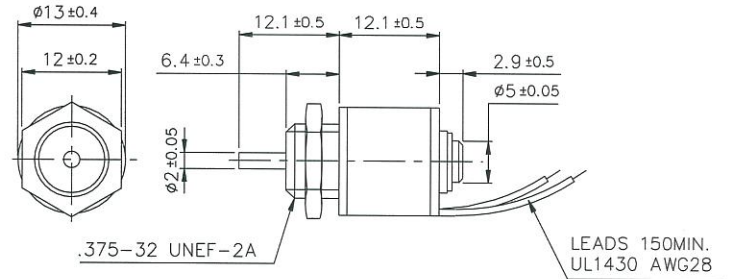
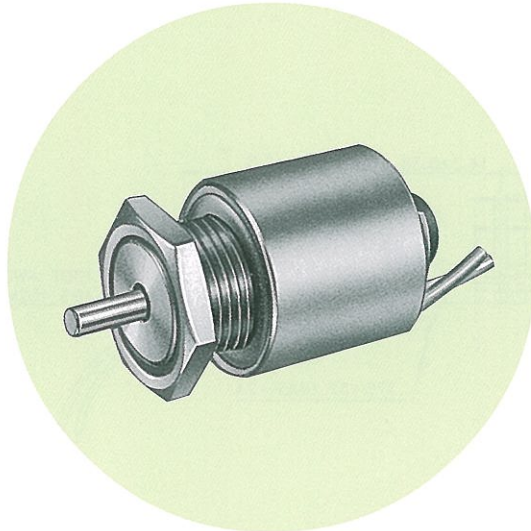




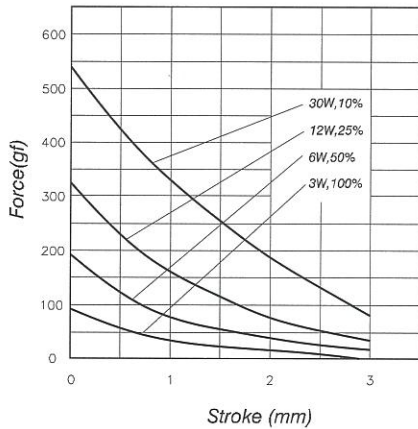
SMT-1312S Tubular Solenoids



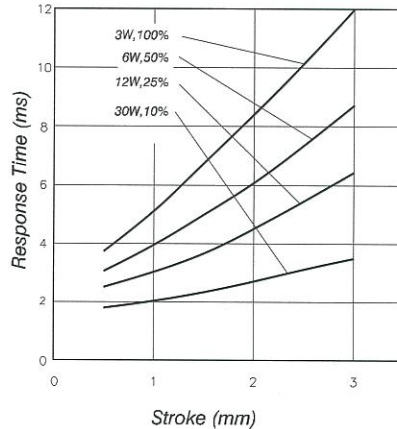
Plunger Weight 可動鐵心重量 : 2g
Total Weight 總重量 : 15g

Shown Energized 通電狀態 UNIT 單位 : mm

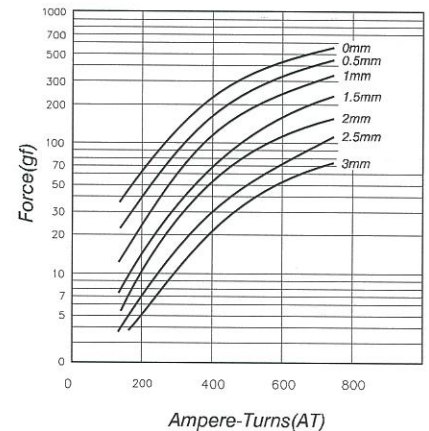
STROKE Vs FORCE 行程 / 吸引力



STROKE Vs RESPONSE TIME 行程 / 反應時間



AMPERE-TURNS Vs FORCE 安-匝 / 吸引力



COIL DATA 線圈資料

Heat Sink: 50 × 50 × 3mm (aluminum)
散熱片 : 50 × 50 × 3mm (鋁)

Duty cycle (%) = $\frac{\text{"ON" time}}{\text{"ON" time} + \text{"OFF" time}} \times 100\%$	Continuous (100%)	Or less (50%)	Or less (25%)	Or less (10%)		
作動週期 (%) = $\frac{\text{ON 時間}}{\text{ON 時間} + \text{OFF 時間}} \times 100\%$	連續 (100%)	間斷 (50%)	間斷 (25%)	間斷 (10%)		
MAX. "on" time in seconds 最大 ON 時間 (秒)	∞	38	4	1		
Watts at 20°C 瓦特數 (W) (在 20°C)	3	6	12	30		
Ampere-turns at 20°C AT 值 (在 20°C)	232	330	465	735		
Type no.	Resistance (20°C) $\Omega \pm 10\%$	No. turns	Volts DC			
型號	阻值 (Ω) $\pm 10\%$	繞線圈數	電壓			
SMT-1312S03AA	3	232	3	4.2	6	9.5
SMT-1312S06AA	12	464	6	8.5	12	19
SMT-1312S12AA	48	928	12	17	24	38
SMT-1312S24AA	192	1856	24	34	48	76