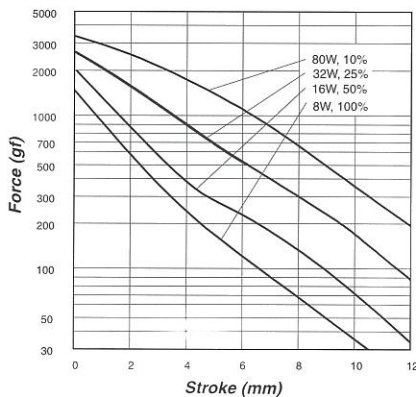


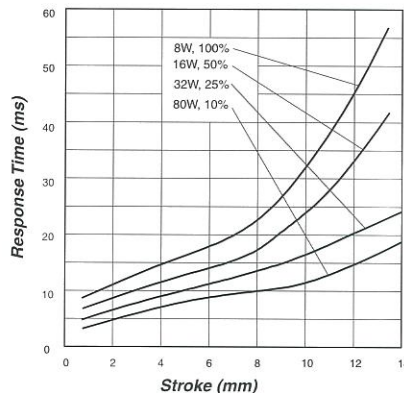
Plunger Weight 可動鐵心重量 : 19g
Total Weight 總重量 : 125g

Shown Energized 通電狀態 UNIT 單位 : mm

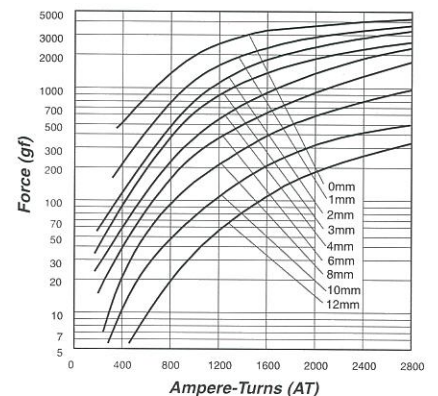
STROKE Vs FORCE 行程 / 吸引力



STROKE Vs RESPONSE TIME 行程 / 反應時間



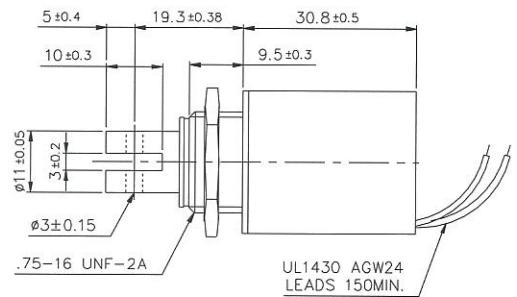
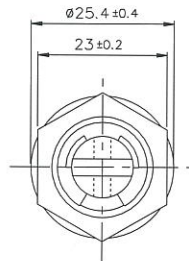
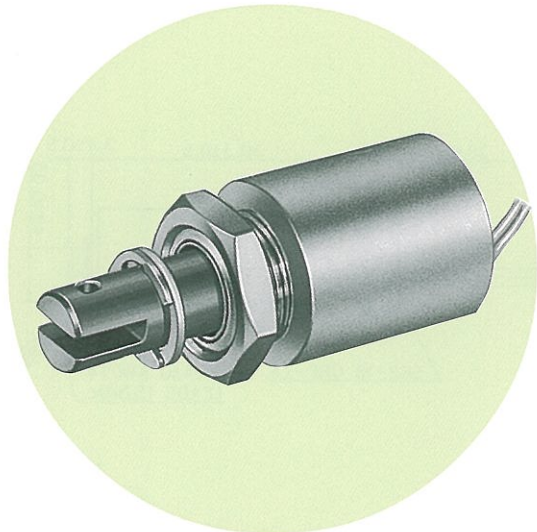
AMPERE-TURNS Vs FORCE 安-匝 / 吸引力



COIL DATA 線圈資料

Heat Sink: 100 × 100 × 3mm (aluminum)
散熱片 : 100 × 100 × 3mm (鋁)

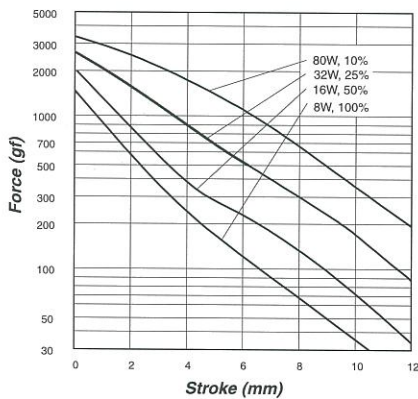
| Duty cycle (%) = $\frac{\text{"ON" time}}{\text{"ON" time} + \text{"OFF" time}} \times 100\%$ | Continuous (100%) | Or less (50%) | Or less (25%) | Or less (10%) | | |
|---|------------------------------|---------------|---------------|---------------|----|-----|
| 作動週期 (%) = $\frac{\text{ON 時間}}{\text{ON 時間} + \text{OFF 時間}} \times 100\%$ | 連續 (100%) | 間斷 (50%) | 間斷 (25%) | 間斷 (10%) | | |
| MAX. "on" time in seconds 最大 ON 時間 (秒) | ∞ | 360 | 32 | 8 | | |
| Watts at 20°C 瓦特數 (W) (在 20°C) | 8 | 16 | 32 | 80 | | |
| Ampere-turns at 20°C AT 值 (在 20°C) | 666 | 942 | 1332 | 2106 | | |
| Type no. | Resistance (20°C) Ω ± 10% | No. turns | Volts DC | | | |
| 型號 | 阻值(Ω) ± 10% | 繞線圈數 | 電壓 | | | |
| SMT-2530S06AA | 4.5 | 500 | 6 | 8.5 | 12 | 19 |
| SMT-2530S12AA | 18 | 999 | 12 | 17 | 24 | 38 |
| SMT-2530S24AA | 72 | 1998 | 24 | 34 | 48 | 76 |
| SMT-2530S48AA | 288 | 3996 | 48 | 68 | 96 | 152 |



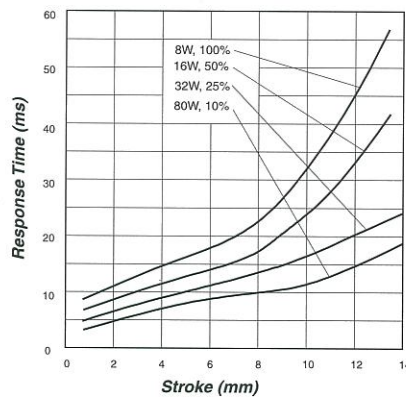
Plunger Weight 可動鐵心重量 : 32g
Total Weight 總重量 : 125g

Shown Energized 通電狀態 UNIT 單位 : mm

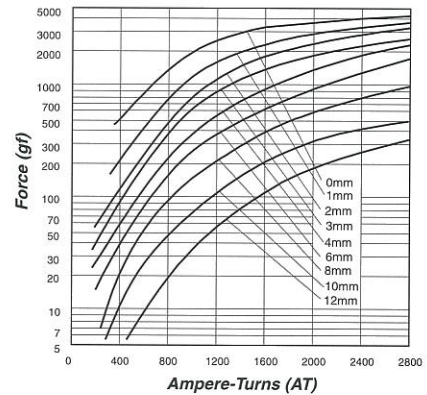
STROKE Vs FORCE 行程 / 吸引力



STROKE Vs RESPONSE TIME 行程 / 反應時間



AMPERE-TURNS Vs FORCE 安-匝 / 吸引力



COIL DATA 線圈資料

Heat Sink: 100 × 100 × 3mm (aluminum)
散熱片 : 100 × 100 × 3mm (鋁)

| Duty cycle (%) = $\frac{\text{"ON" time}}{\text{"ON" time} + \text{"OFF" time}} \times 100\%$ | | Continuous (100%) | Or less (50%) | Or less (25%) | Or less (10%) | |
|---|--|-------------------|---------------|---------------|---------------|-----|
| 作動週期 (%) = $\frac{\text{ON 時間}}{\text{ON 時間} + \text{OFF 時間}} \times 100\%$ | | 連續 (100%) | 間斷 (50%) | 間斷 (25%) | 間斷 (10%) | |
| MAX. "on" time in seconds 最大 ON 時間 (秒) | | ∞ | 360 | 32 | 8 | |
| Watts at 20°C 瓦特數 (W) (在 20°C) | | 8 | 16 | 32 | 80 | |
| Ampere-turns at 20°C AT 值 (在 20°C) | | 666 | 942 | 1332 | 2106 | |
| Type no. | Resistance (20°C) $\Omega \pm 10\%$ | No. turns | Volts DC | | | |
| 型號 | 阻值 (Ω) $\pm 10\%$ | 繞線圈數 | 電壓 | | | |
| SMT-2530L06AA | 4.5 | 500 | 6 | 8.5 | 12 | 19 |
| SMT-2530L12AA | 18 | 999 | 12 | 17 | 24 | 38 |
| SMT-2530L24AA | 72 | 1998 | 24 | 34 | 48 | 76 |
| SMT-2530L48AA | 288 | 3996 | 48 | 68 | 96 | 152 |