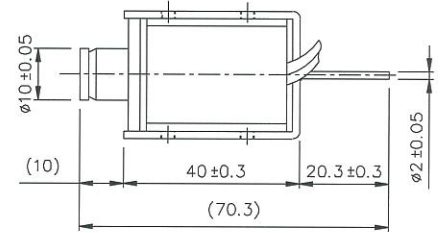
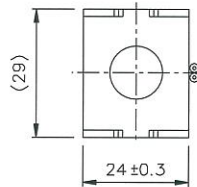
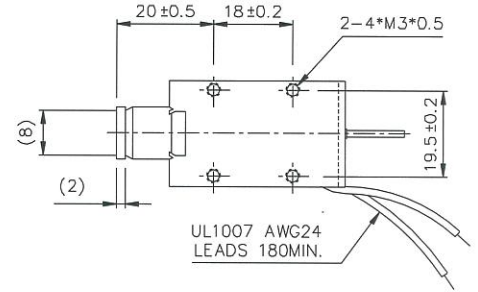
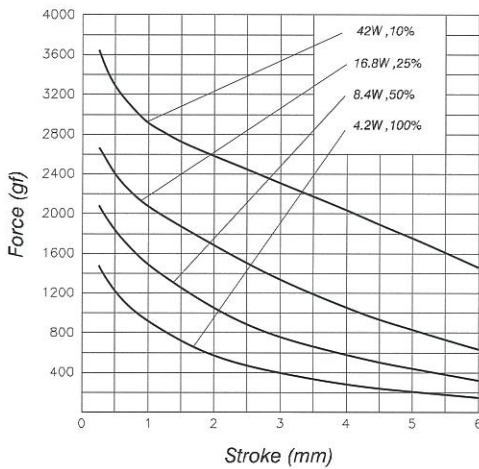


Plunger Weight 可動鐵心重量 : 22g  
Total Weight 總重量 : 122g

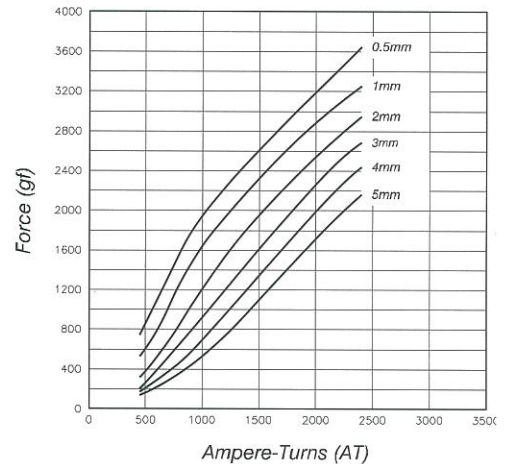


Shown Energized 通電狀態 UNIT 單位 : mm

### STROKE Vs FORCE 行程 / 吸引力

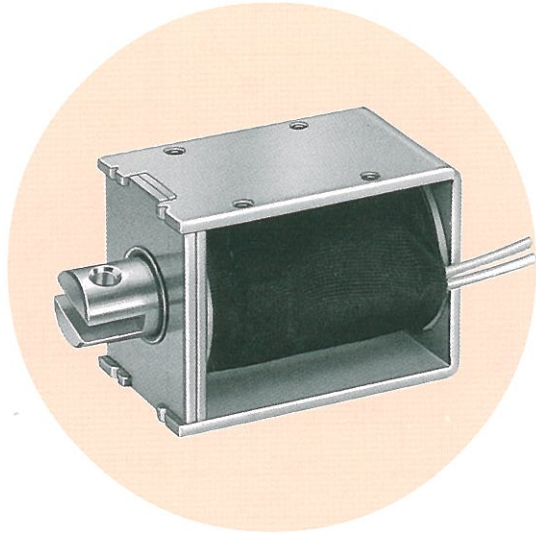


### AMPERE-TURNS Vs FORCE 安-匝 / 吸引力

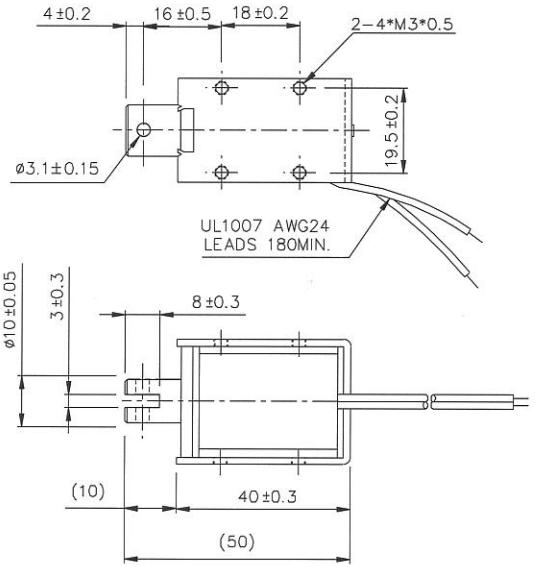
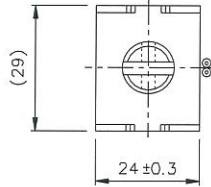


### COIL DATA 線圈資料

Duty cycle (%) = $\frac{\text{"ON" time}}{\text{"ON" time} + \text{"OFF" time}} \times 100\%$		Continuous (100%)	Or less (50%)	Or less (25%)	Or less (10%)	
作動週期 (%) = $\frac{\text{ON 時間}}{\text{ON 時間} + \text{OFF 時間}} \times 100\%$		連續 (100%)	間斷 (50%)	間斷 (25%)	間斷 (10%)	
MAX. "on" time in seconds 最大 ON 時間 (秒)		$\infty$	100	36	7	
Watts at 20°C 瓦特數 (W) (在 20°C)		4.2	8.4	16.8	42	
Ampere-turns at 20°C AT 值 (在 20°C)		655	925	1310	2075	
Type no.	Resistance (20°C) $\Omega \pm 10\%$	No. turns	Volts DC			
型號	阻值 ( $\Omega$ ) $\pm 10\%$	繞線圈數	電壓			
SMO-1040S06AA	8.6	930	6	8.5	12	19
SMO-1040S12AA	34	1900	12	17	24	38
SMO-1040S24AA	137	3690	24	34	48	76
SMO-1040S48AA	548	7590	48	68	96	152

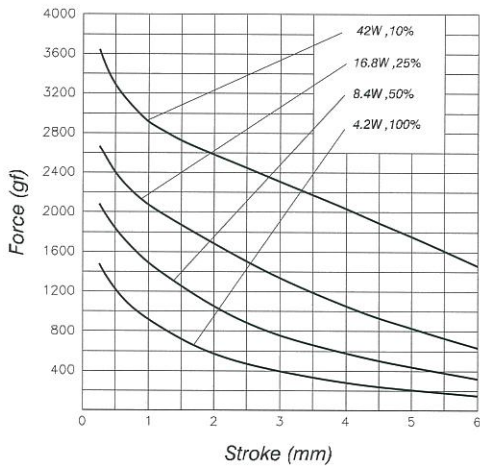


Plunger Weight 可動鐵心重量 : 22g  
Total Weight 總重量 : 122g

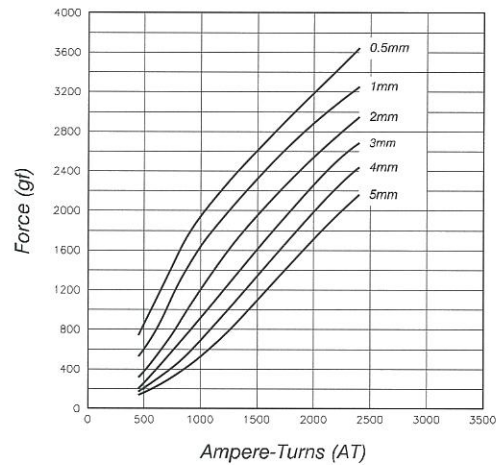


Shown Energized 通電狀態 UNIT 單位 : mm

### STROKE Vs FORCE 行程 / 吸引力



### AMPERE-TURNS Vs FORCE 安-匝 / 吸引力



### COIL DATA 線圈資料

Duty cycle (%) = $\frac{\text{"ON" time}}{\text{"ON" time} + \text{"OFF" time}} \times 100\%$			Continuous (100%)	Or less (50%)	Or less (25%)	Or less (10%)
作動週期 (%) = $\frac{\text{ON 時間}}{\text{ON 時間} + \text{OFF 時間}} \times 100\%$			連續 (100%)	間斷 (50%)	間斷 (25%)	間斷 (10%)
MAX. "on" time in seconds 最大 ON 時間 (秒)			$\infty$	100	36	7
Watts at 20°C 瓦特數 (W) (在 20°C)			4.2	8.4	16.8	42
Ampere-turns at 20°C AT 值 (在 20°C)			655	925	1310	2075
Type no.	Resistance (20°C) $\Omega \pm 10\%$	No. turns	Volts DC			
型號	阻值( $\Omega$ ) $\pm 10\%$	繞線圈數	電壓			
SMO-1040L06AA	8.6	930	6	8.5	12	19
SMO-1040L12AA	34	1900	12	17	24	38
SMO-1040L24AA	137	3690	24	34	48	76
SMO-1040L48AA	548	7590	48	68	96	152