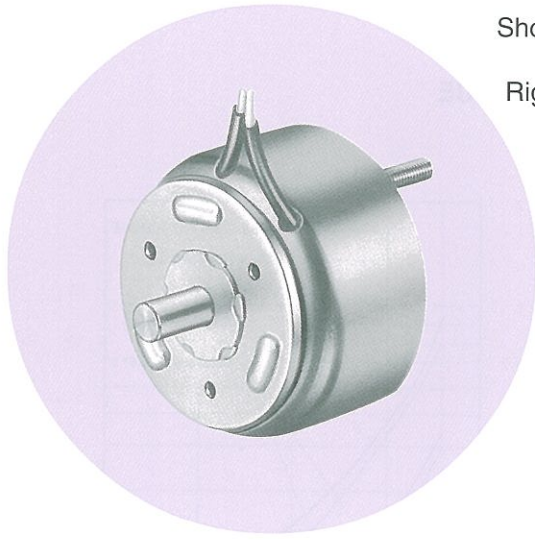
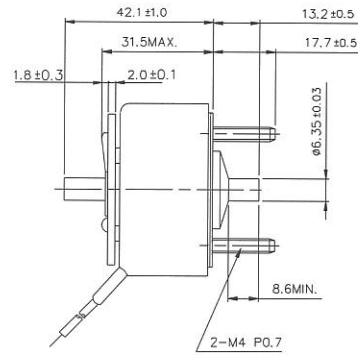


SMTR-4931 Rotary Solenoids

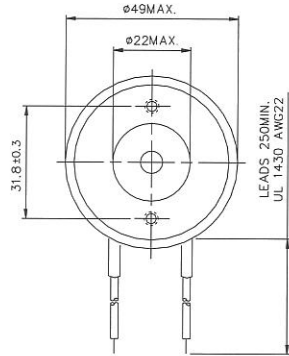
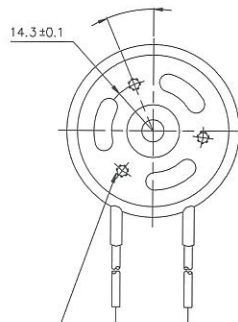


Weight 重量 : 330g

UNIT 單位 : mm
Shown De-energized 斷電狀態
Right Hand Rotation 右邊旋轉



1/2 ROTATION ANGLE ±3° TO LEFT OF CENTER FOR R.H. ROTATION, RIGHT OF CENTER FOR L.H. ROTATION.



COIL DATA 線圈資料

Heat Sink : 190 × 190 × 3mm (aluminum)
Return spring torque : 0.026 ~ 0.035 N.m

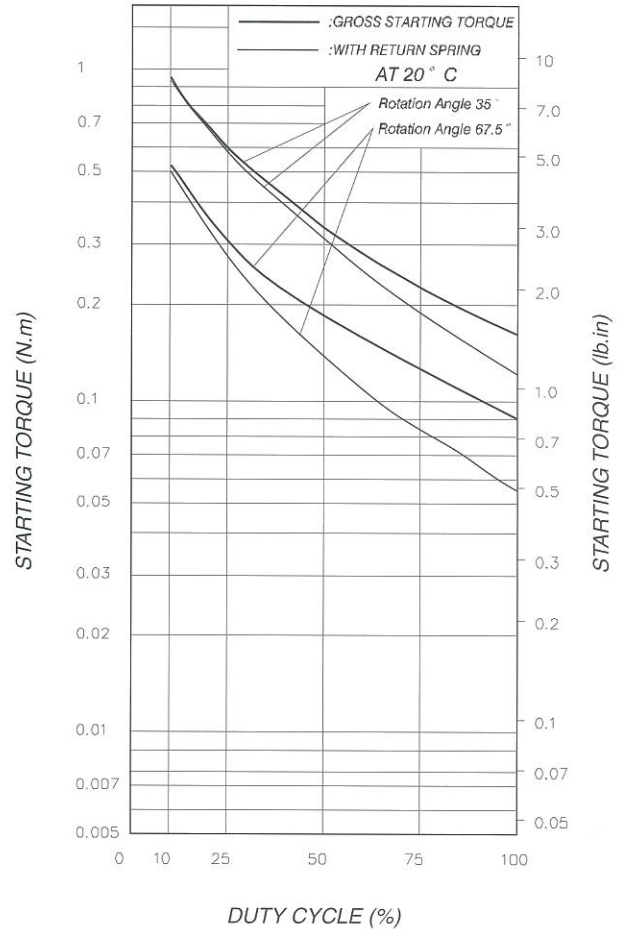
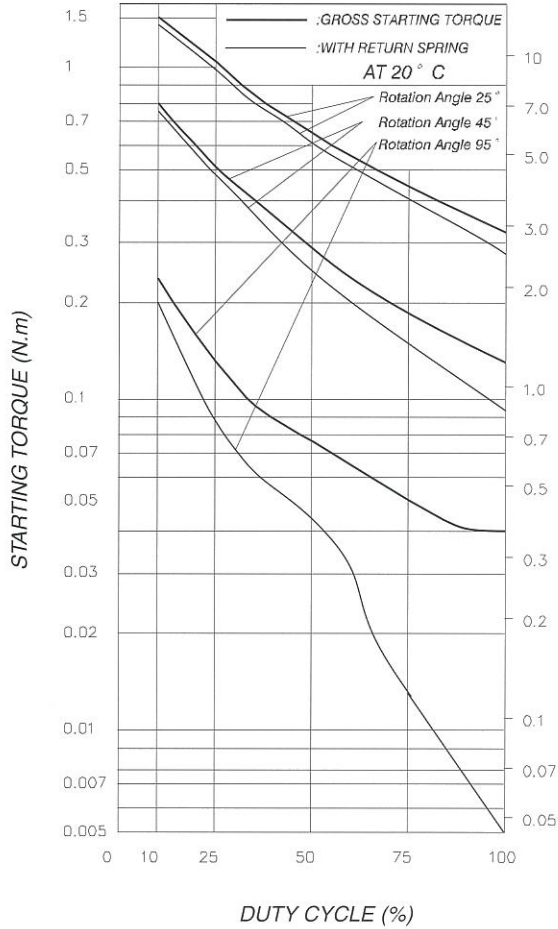
散熱片 : 190 × 190 × 3mm (鋁)
復歸彈簧扭力 : 0.026 ~ 0.035 牛頓·米

Duty cycle (%) = $\frac{\text{"ON" time}}{\text{"ON" time} + \text{"OFF" time}} \times 100\%$ 作動週期 (%) = $\frac{\text{ON 時間}}{\text{ON 時間} + \text{OFF 時間}} \times 100\%$		Continuous (100%) 連續 (100%)	Or less (75%) 間斷 (75%)	Or less (50%) 間斷 (50%)	Or less (25%) 間斷 (25%)	Or less (10%) 間斷 (10%)	
MAX. "on" time in seconds 最大 ON 時間 (秒)		∞	110	100	36	10	
Watts at 20°C 瓦特數 (W) (在 20°C)		21	28	42	84	210	
Ampere-turns at 20°C AT 值 (在 20°C)		1015	1172	1440	2030	3210	
Gross starting torque at 20°C (N · m) 起始扭力 (牛頓·米) (在 20°C)		A: 25°	0.32	0.44	0.66	1.04	1.54
		B: 35°	0.16	0.22	0.35	0.61	0.96
		C: 45°	0.13	0.18	0.28	0.52	0.79
		D: 67.5°	0.09	0.12	0.17	0.31	0.52
		E: 95°	0.04	0.05	0.08	0.12	0.24
Type no. 型號	Resistance (20°C) Ω ± 10% 阻值(Ω) ± 10%	No. turns 繞線圈數	Volts DC 電壓				
SMTR-4931 □□ 4.5AA	1.00	228	4.5	5.2	6.4	8.9	14.1
SMTR-4931 □□ 5.7AA	1.68	301	5.7	6.6	8.1	11.4	17.9
SMTR-4931 □□ 7.2AA	2.70	384	7.2	8.3	10.1	14.3	23.0
SMTR-4931 □□ 9.0AA	4.30	486	9.0	10.4	12.7	18.0	28.0
SMTR-4931 □□ 11.5AA	6.66	590	11.5	13.2	16.2	23.0	36.0
SMTR-4931 □□ 14.0AA	10.3	737	14.0	16.1	20.0	28.0	44.0
SMTR-4931 □□ 17.7AA	15.7	900	17.7	20.4	25.0	35.0	56.0
SMTR-4931 □□ 23AA	26.6	1190	23	27	32	45	72
SMTR-4931 □□ 28AA	38.0	1380	28	32	40	56	89
SMTR-4931 □□ 36AA	62.1	1768	36	41	51	71	113
SMTR-4931 □□ 45AA	96.1	2166	45	52	64	90	143
SMTR-4931 □□ 57AA	157	2816	57	66	80	113	179
SMTR-4931 □□ 71AA	241	3432	71	82	101	143	226
SMTR-4931 □□ 90AA	364	4108	90	104	128	180	285
SMTR-4931 □□ 117AA	566	4920	117	136	166	234	370
SMTR-4931 □□ 146AA	910	6340	146	168	207	292	462
SMTR-4931 □□ 183AA	1224	6800	183	211	260	366	-

□□ : Rotation Direction and Angle □□ : 旋轉方向及角度

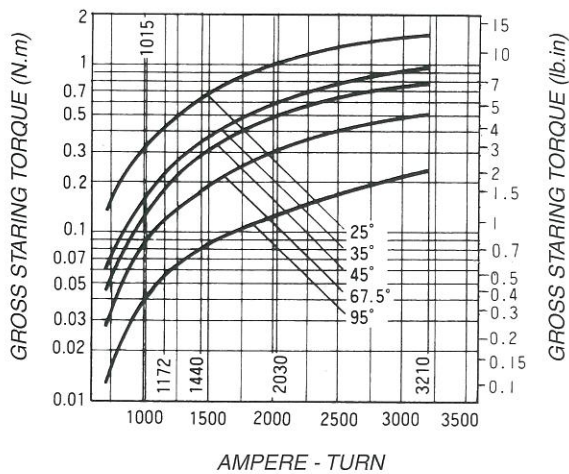
DUTY CYCLE Vs STARTING TORQUE

工作週期 / 起始扭力



AMPERE TURN Vs GROSS STARTING TORQUE

安-匝 / 起始扭力



AMPERE-TURN Vs RESPONSE TIME

安-匝 / 反應時間

